






### 14 Sheppard Close Tuncurry NSW

4  2  4 

- \*\* Near-new, modern 4 bedroom, 2.5 bathroom home on generous 704sqm block
- \*\* Spacious open plan living with gourmet kitchen & walk-in butlers pantry
- \*\* Separate lounge plus multiple covered alfresco entertaining areas
- \*\* Master retreat with ensuite, double vanity, WIR & separate WC
- \*\* Side access to 6m x 6m shed, ideal for storage, workshop or toys
- \*\* Quiet Tuncurry cul-de-sac location close to schools, parks & CBD

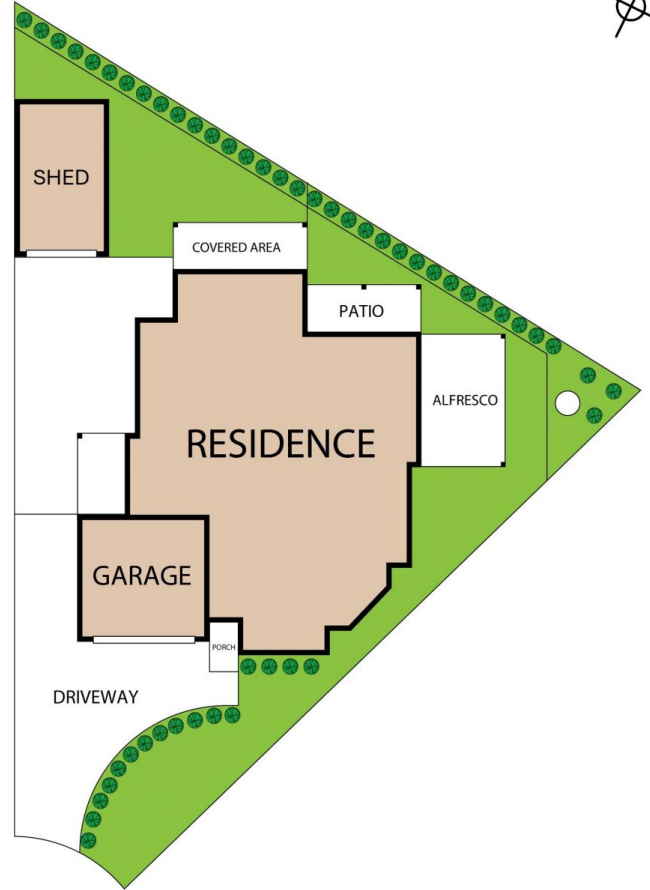
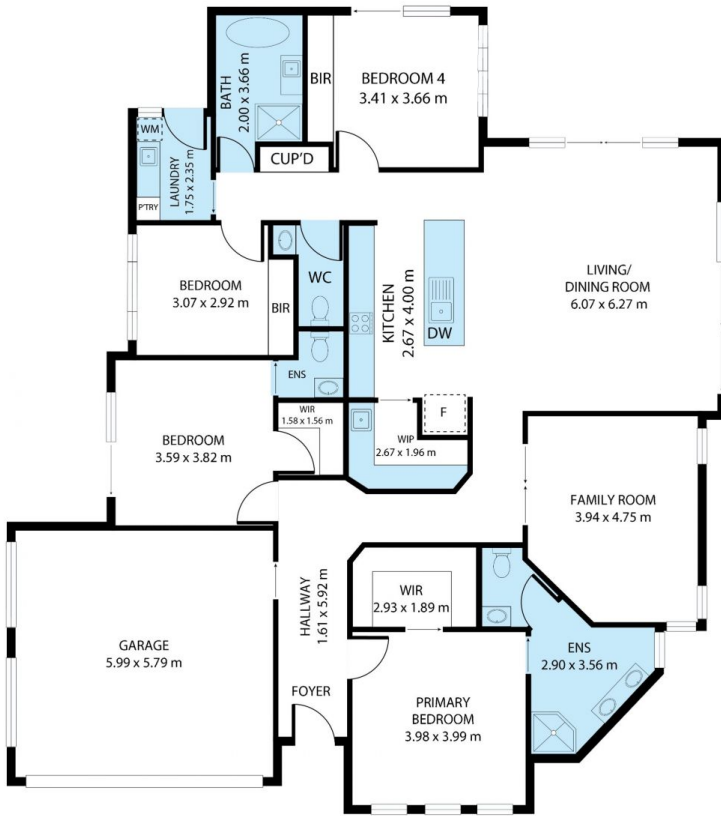
Offering modern style, generous proportions and exceptional functionality, this impressive family home is

[For full version visit the website](https://www.tuncurryfn.com.au)

**Type** : House  
**Price** : Guide - \$1,199,000  
**Land Size** : 704 sqm  
**View** : <https://www.tuncurryfn.com.au/sale/nsw/mid-north-coast/tuncurry/residential/house/8629390>



**Broc Buderus**  
02 6554 5011



14 Sheppard Close, Tuncurry, NSW, 2428

TOTAL APPROX. FLOOR AREA 227 SQ.M

Whilst every attempt has been made to ensure the accuracy of the floor plan contained here, measurements of doors, windows, rooms and any other items are approximate and no responsibility is taken for any error, omission, or misstatement. This plan is for illustrative purposes only and should be used as such by any prospective purchaser.